

SATMELL GROUP  
PROPOSED INDUSTRIAL DEVELOPMENT

NO. 457-463  
VICTORIA STREET, WETHERILL PARK



# UNIT 17

	gross (m <sup>2</sup> )
ground floor area	184.50
first floor area	31.30
TOTAL	215.80 m <sup>2</sup>
car spaces	3.00

DEVELOPED BY THE  
SATMELL GROUP



MEMBER OF:

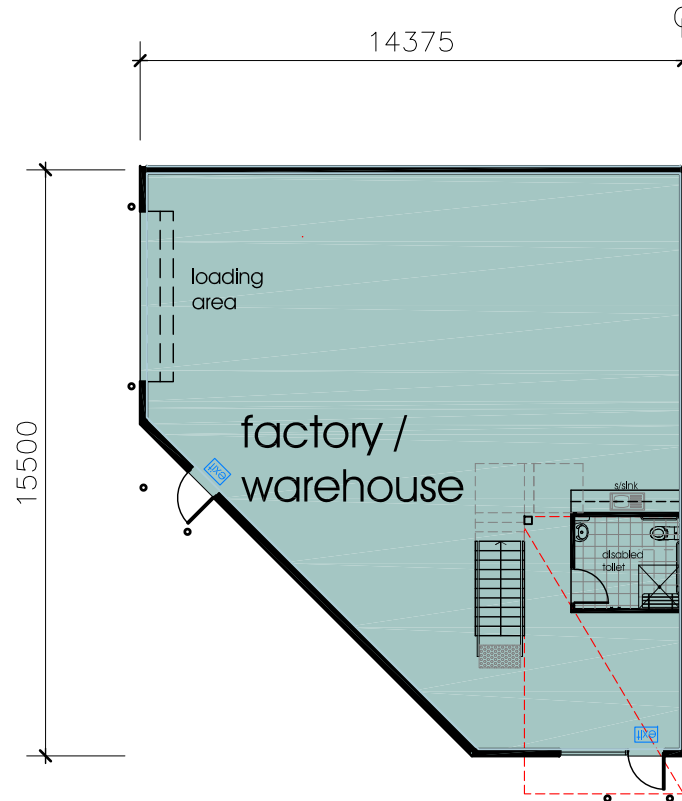
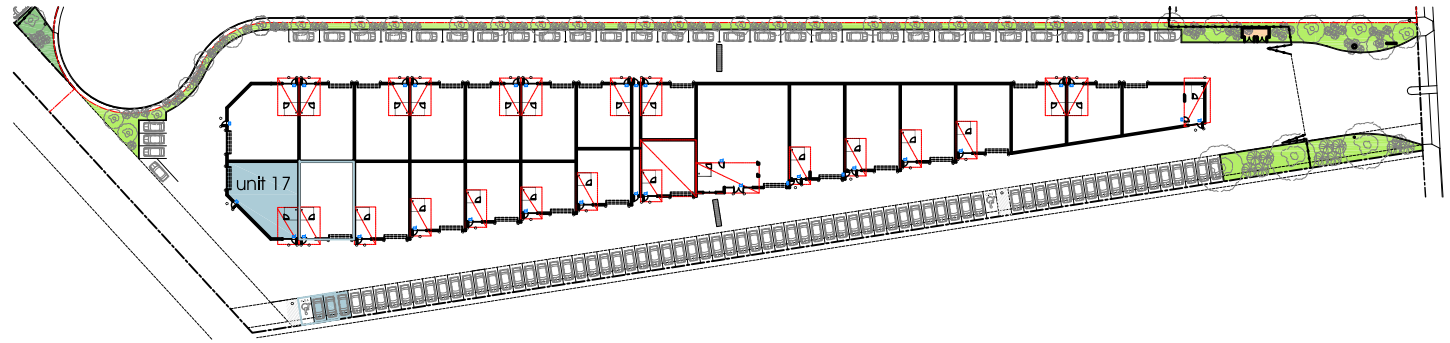


Building Practitioner Licence  
No. 127447  
Wetters Bay Road  
PO BOX 4501 TORONTO NSW 2167  
Tel: (02) 9338 2800 Fax: (02) 9338 2801  
www.bongiorno.com.au

**NOTE**

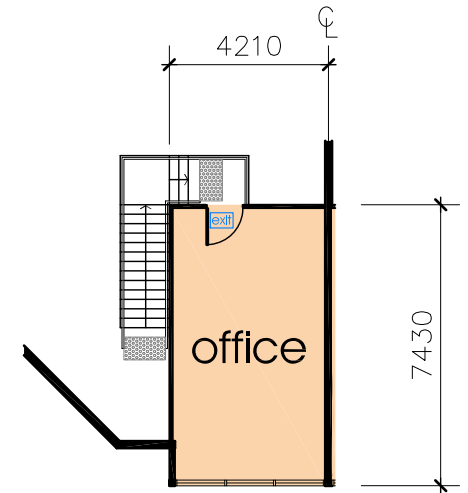
drawing is not part of any legal document(s) or title and is subject to errors, omissions, inaccuracies and should not be used as a sole and accurate reference. Interested parties should make their own enquiries using independent sources

All areas are approximate only, final finishes, layouts and locations may vary from the depiction in this brochure, images are for illustration purposes only.



ground floor plan

scale 1:200[a4]



first floor plan

scale 1:200[a4]