

SATMELL GROUP
PROPOSED INDUSTRIAL DEVELOPMENT

NO. 457-463
VICTORIA STREET, WETHERILL PARK

UNIT 18

	gross (m ²)
ground floor area	170.50
first floor area	31.30
TOTAL	201.80 m ²
car spaces	3.00

DEVELOPED BY THE
SATMELL GROUP



MEMBER OF:

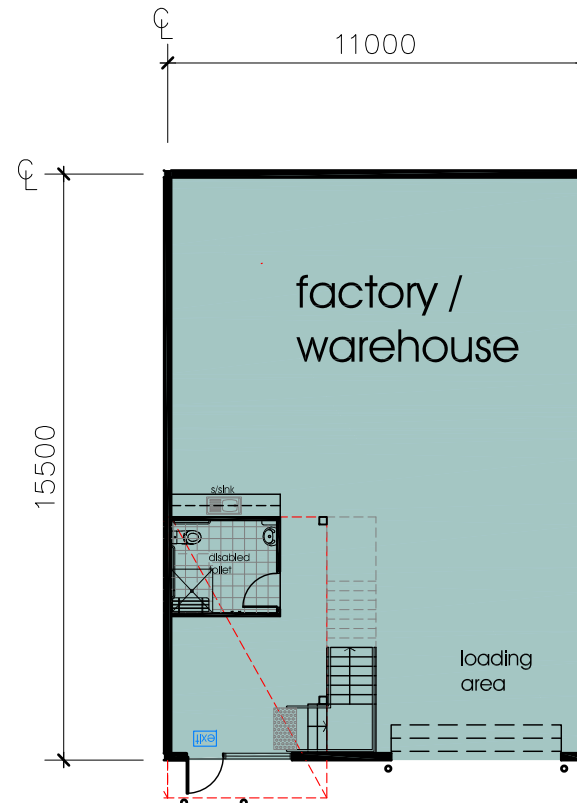
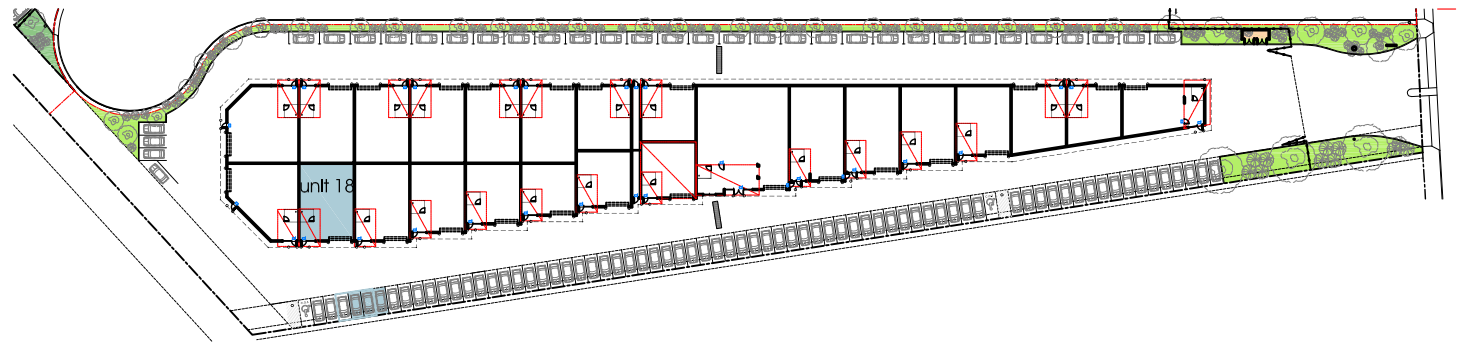


bdag
ACCREDITED
BUILDING DESIGNER
Suite 208, 12/43 Wetherill Park Road
PO BOX 451, WETHERILL PARK NSW 2157
P: 002 5736 2800 F: 002 5736 2801
E: info@bdag.com.au

NOTE

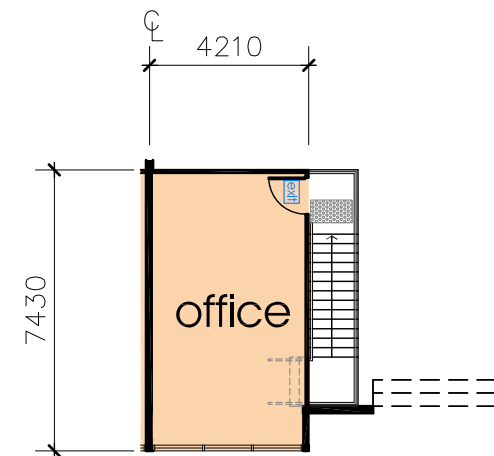
drawing is not part of any legal document(s) or title and is subject to errors, omissions, inaccuracies and should not be used as a sole and accurate reference. Interested parties should make their own enquiries using independent sources

All areas are approximate only, final finishes, layouts and locations may vary from the depiction in this brochure, images are for illustration purposes only.



ground floor plan

scale 1:200[a4]



first floor plan

scale 1:200[a4]