

SATMELL GROUP  
PROPOSED INDUSTRIAL DEVELOPMENT

NO. 457-463  
VICTORIA STREET, WETHERILL PARK



# UNIT 19

	gross (m <sup>2</sup> )
ground floor area	170.50
first floor area	31.30
TOTAL	201.80 m <sup>2</sup>
car spaces	3.00

DEVELOPED BY THE  
SATMELL GROUP



MEMBER OF:

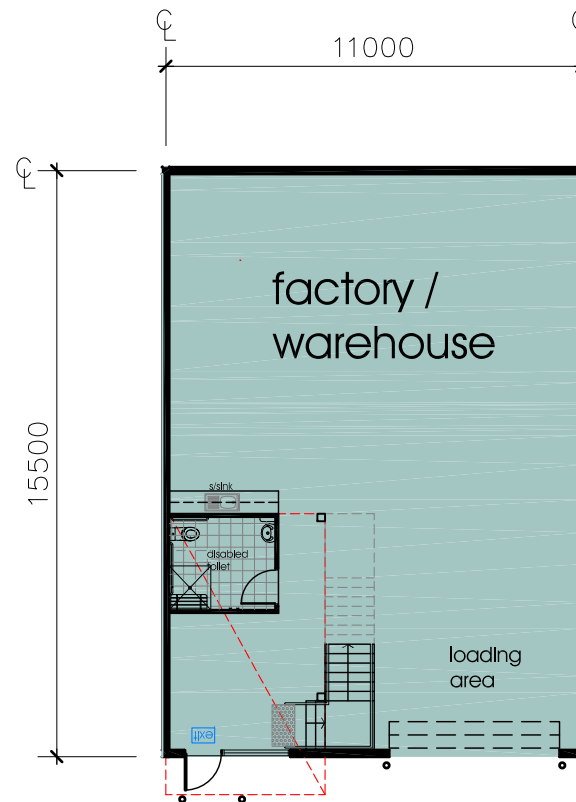
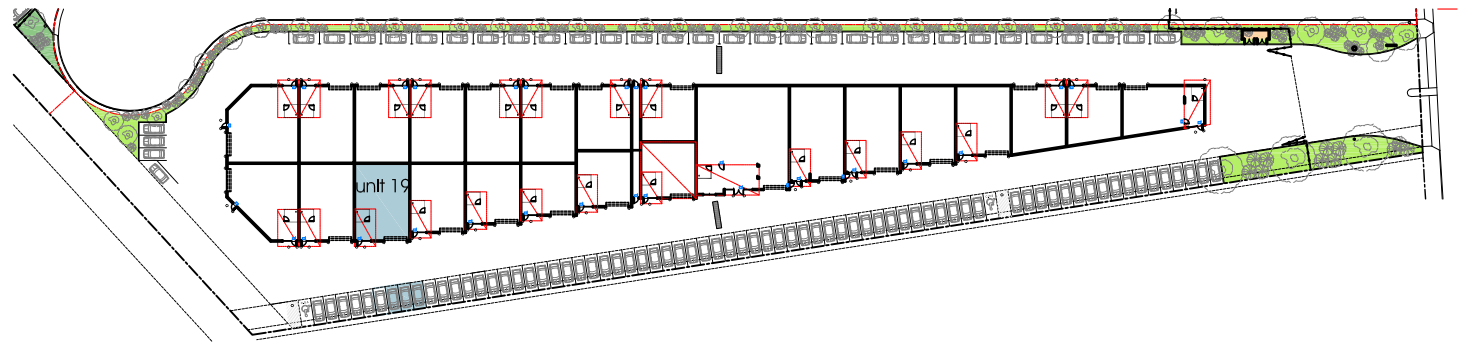


bdag  
ACCREDITED  
BUILDING DESIGNER

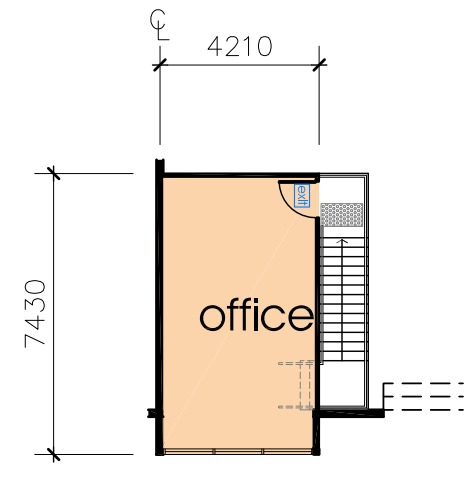
**NOTE**

drawing is not part of any legal document(s) or title and is subject to errors, omissions, inaccuracies and should not be used as a sole and accurate reference. Interested parties should make their own enquiries using independent sources

All areas are approximate only, final finishes, layouts and locations may vary from the depiction in this brochure, images are for illustration purposes only.



ground floor plan  
scale 1:200[a4]



first floor plan  
scale 1:200[a4]