

SATMELL GROUP
PROPOSED INDUSTRIAL DEVELOPMENT

NO. 457-463
VICTORIA STREET, WETHERILL PARK



UNIT 23

	gross (m ²)
ground floor area	123.00
first floor area	31.30
TOTAL	154.30 m ²
car spaces	3.00

DEVELOPED BY THE
SATMELL GROUP



MEMBER OF:

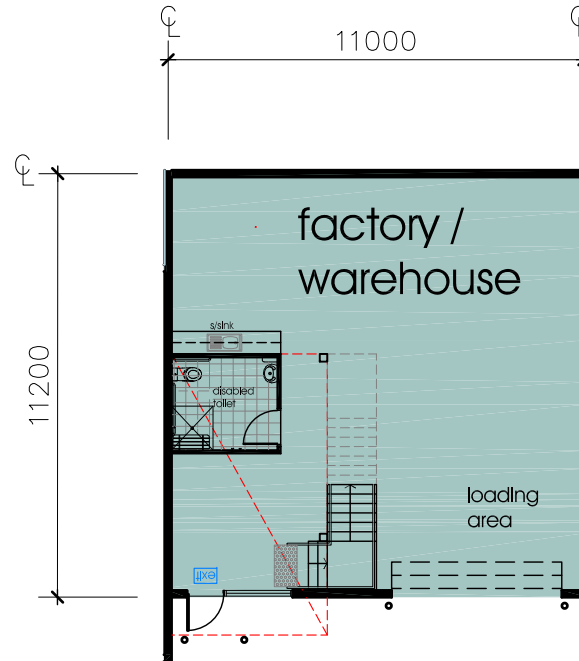
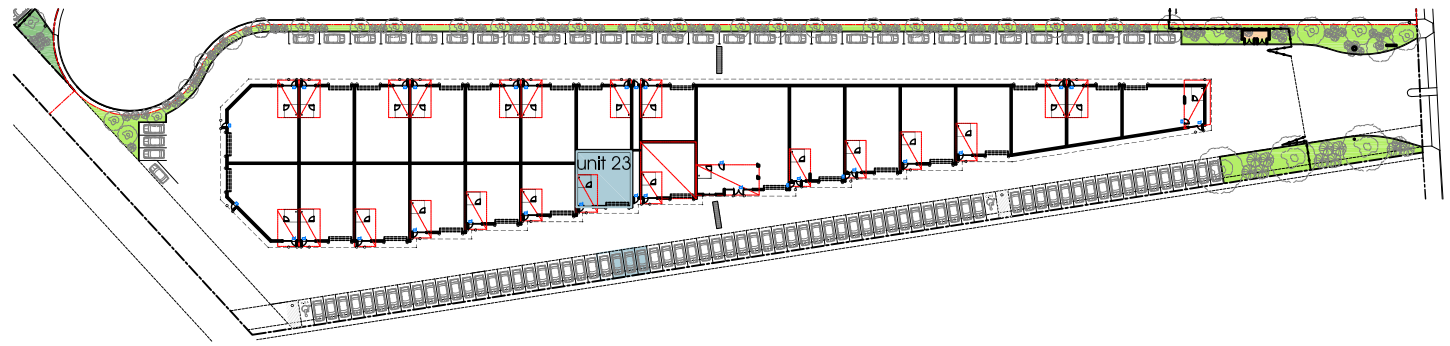
bdgg
ACCREDITED
BUILDING DESIGNER

5/101E P.O. BOX 4511, WETHERILL PARK
P.O. BOX 4511, WETHERILL PARK, SA 5161
T: (0800) 8138 3820 F: (0800) 508 2820
E: bdgg@bdgg.com.au

NOTE

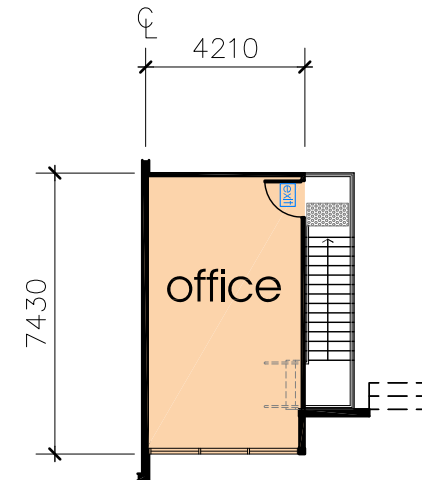
drawing is not part of any legal document(s) or title and is subject to errors, omissions, inaccuracies and should not be used as a sole and accurate reference. Interested parties should make their own enquiries using independent sources

All areas are approximate only, final finishes, layouts and locations may vary from the depiction in this brochure, images are for illustration purposes only.



ground floor plan

scale 1:200[a4]



first floor plan

scale 1:200[a4]